

# WHEELCHAIR RAMPS

MOBILEX SELECTION OF RAMPS



# TABLE OF CONTENTS

<b>CHANNEL RAMP</b> .....	<b>3</b>
FOLDABLE RAMP RAILS MODEL CH.....	3
<b>TELESCOPIC RAMPS</b> .....	<b>3</b>
TELESCOPIC RAMPS MODEL TR AND LR.....	3
RAMPS MODEL TM.....	3
<b>SINGLE FOLDED RAMPS</b> .....	<b>4</b>
SINGLE FOLDING SUITCASE RAMPS MODEL SF.....	4
SINGLE FOLDING SUITCASE RAMPS MODEL SC.....	4
<b>DOUBLE FOLDED RAMPS</b> .....	<b>4</b>
DOUBLE FOLDING SUITCASE RAMPS MODEL DF.....	4
QUADRUPLE FOLDING SUITCASE RAMPS MODEL SR.....	5
<b>TERRACE RAMPS</b> .....	<b>5</b>
TERRACE RAMPS MODEL T80.....	5
TERRACE RAMPS MODEL TSR.....	5
<b>THRESHOLD RAMPS</b> .....	<b>6</b>
THRESHOLD RAMPS OF ALUMINIUM MODEL DS .....	6
DOOR RAILS.....	6
RUBBER RAMPS.....	6
<b>CARBON FIBRE RAMP</b> .....	<b>7</b>
CARBON FIBRE RAMP MODEL CB.....	7

## More information?

On these pages you will find a small selection of our extensive product range. If you are interested in our full range, we invite you to visit our website [www.mobilex.dk](http://www.mobilex.dk), where you can view all products and download our catalog. The QR code will take you to our website.



# CHANNEL RAMP

## FOLDABLE RAMP RAILS MODEL CH

The ramp is made of aluminium and coated with a friction coating. It consists of two separate drive-on rails, which can be folded in the middle and are equipped with carrying handles so that they can be carried like a suitcase when closed. The CH ramps must be used in pairs.



CH ramps	CH-180
Length	180 cm
Width (per rail)	23,5 cm
Surface width	21 cm
Height of side protect. (ext./int.)	6,0 cm / 3,3 cm
Max. elevation / height	12° / 36 cm
Weight (1 pair)	13 kg
Max. load	300 kg
Folded size (L x W x H)	93 x 27 x 21 cm



# TELESCOPIC RAMPS

## TELESCOPIC RAMPS MODEL TR AND LR

The ramps consist of two separate ramps made of high quality aluminium with three segments each, which are equipped with a lock to prevent unintentional extension and retraction of the segments. The models "LR" are equipped with a practical carrying bag, which can be hung on the wheelchair. The carrying bag is also available as an optional accessory for the "TR" models (extra charge). The telescopic ramps must be used in pairs.



TR/LR ramps	TR-150	TR-210	TR-300	LR-150	LR-210
Length	150 cm	210 cm	300 cm	150 cm	210 cm
Width (per rail)	26 cm	26 cm	26 cm	16 cm	16 cm
Surface width	19 cm	19 cm	19 cm	10 cm	10 cm
Height of side protect.	7/5 cm	7/5 cm	7/5 cm	5,5/3 cm	5,5/3 cm
Max. elevation / height	12° / 30 cm	12° / 42 cm	12° / 60 cm	12° / 30 cm	12° / 42 cm
Weight	2 x 5,5 kg	2 x 7,5 kg	2 x 9,5 kg	2 x 3 kg	2 x 4 kg
Max. load per pair	225 kg	225 kg	225 kg	180 kg	180 kg
Folded size cm (L x W x H)	74 x 26,5 x 7	95 x 26,5 x 7	125 x 26,5 x 7	74 x 16,5 x 5,5	95 x 6,5 x 5,5



## RAMPS MODEL TM

The ramps consist of two separate ramps made of high-quality aluminium. The perforated tracks provide an ideal ratio between weight and load capacity. The TM-055 model consists of one fixed element each. The models TM-150 and TM-210 consist of 2 telescopic segments each, the model TM-300 has another foldable element. When folded, the ramps are secured by a simple clip lock. The telescopic ramps must be used in pairs.

TM ramps	TM-055	TM-150	TM-210	TM-300
Length	55 cm	150 cm	210 cm	300 cm
Width (per rail)	25 cm	25 cm	25 cm	26 cm
Surface width	20 cm	20 cm	20 cm	20 cm
Height of side protect.	5,5 cm	5,5 cm	5,5 cm	5,5 cm
Max. elevation / height	12° / 11 cm	12° / 30 cm	12° / 42 cm	12° / 60 cm
Weight	2 x 1,45 kg	2 x 3,95 kg	2 x 5,8 kg	2 x 8,65 kg
Max. load per pair	300 kg	300 kg	300 kg	250 kg
Folded size cm (LxWxH)	55 x 25 x 5,5	98 x 27x 9	128 x 27 x 9	108 x 26 x 13,5



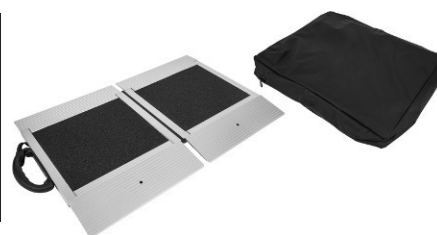
# SINGLE FOLDED RAMPS

## SINGLE FOLDING SUITCASE RAMPS MODEL SF

The ramp is made of aluminium, coated with a friction lining and is foldable in the longitudinal direction, so-called flat ramps. This offers the possibility for the assistant to stand on the ramp together with the vehicle or patient. The ramps are equipped with a carrying handle and can therefore be easily carried like a suitcase when folded. The SF-040 ramp is also equipped with a practical carrying bag that can be hung on the wheelchair.



SF ramps	SF-040	SF-090	SF-120	SF-150
Length	40 cm	90 cm	120 cm	150 cm
Width	71 cm	77 cm	77 cm	77 cm
Surface width	71 cm	73 cm	73 cm	73 cm
Height of side protect.	--	6 cm	6 cm	6 cm
Max. elevation / height	12° / 8 cm	12° / 18 cm	12° / 24 cm	12° / 30 cm
Weight	4 kg	8 kg	10,5 kg	12,5 kg
Max. load	300 kg	300 kg	300 kg	300 kg
Folded size (L x W x H)	45 x 37 x 5 cm	90 x 40 x 10 cm	120 x 40 x 10 cm	150 x 40 x 10 cm



## SINGLE FOLDING SUITCASE RAMPS MODEL SC

Affordable aluminum suitcase ramps with ribbed non-slip surface. The ramps are foldable in longitudinal direction and equipped with a carrying handle. The SC-045 and SC-060 ramps are also equipped with a practical carrying bag that can be hung on the wheelchair.

SC ramps	SC-045	SC-060	SC-090	SC-120	SC-150	SC-180
Length	46 cm	62 cm	92 cm	122 cm	152 cm	182 cm
Width	77 cm	77 cm	77 cm	77 cm	77 cm	77 cm
Surface width	76 cm	76 cm	76 cm	76 cm	76 cm	76 cm
Height of side protect	3,5 cm	3,5 cm	3,5 cm	3,5 cm	3,5 cm	3,5 cm
Max. elevation / height	12° / 9 cm	12° / 12 cm	12° / 18 cm	12° / 24 cm	12° / 30 cm	12° / 36 cm
Weight	4,50 kg	6,50 kg	9,00 kg	12,00 kg	15,00 kg	18,00 kg
Max. load	300 kg	300 kg	300 kg	300 kg	300 kg	300 kg
Folded size cm (L x W x H)	45 x 40 x 8	62 x 40 x 8	92 x 40 x 8	122 x 40 x 8	152 x 40 x 8	182 x 40 x 8

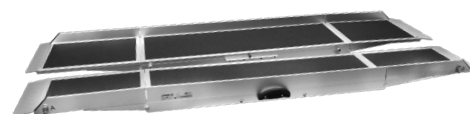


# DOUBLE FOLDED RAMPS

## DOUBLE FOLDING SUITCASE RAMPS MODEL DF

Made of aluminium and coated with a friction coating. Longer flat ramp consisting of a left and a right ramp part, foldable in the middle and each equipped with carrying handles for easy transport.

DF ramps	DF-180	DF-240	DF-300
Length	180 cm	240 cm	300 cm
Width (per rail)	79 cm	79 cm	79 cm
Surface width	75 cm	75 cm	75 cm
Height of side protect.	6 cm (inner)	6 cm (inner)	6 cm (inner)
Max. elevation / height	12° / 36 cm	12° / 48 cm	12° / 60 cm
Weight (1 pair)	16 kg	22 kg	27,2 kg
Max. load	300 kg	300 kg	300 kg
Folded size cm (L x W x H)	91 x 36 x 19	124 x 40 x 19	154 x 40 x 19



## QUADRUPLE FOLDING SUITCASE RAMPS MODEL SR

Made of aluminium and coated with a friction coating. Longer flat ramp consisting of four ramp parts that can be folded like a sheet of paper. The ramps are equipped with a carrying handle for easy transportation.

SR ramps	SR-180	SR-240
Length	180 cm	240 cm
Width	75 cm	75 cm
Surface width	72 cm	72 cm
Height of side protect.	Outer side: 6 cm	Outer side: 6 cm
Max. elevation / height	12° / 36 cm	12° / 48 cm
Weight	14,1 kg	18,5 kg
Max. load	300 kg	300 kg
Folded size (L x W x H)	102 x 28 x 38 cm	135 x 31 x 38 cm

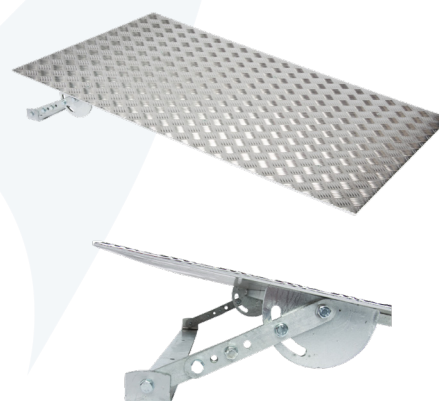


## TERRACE RAMPS

### TERRACE RAMPS MODEL T80

Terrace ramp made of aluminium with ribbed, non-slip surface and stepless height adjustment. The ramp is designed to be stable on the ground - so fixed mounting is not required. It is mounted so that it reaches the upper level of the door sill. Since it has no upstanding edges, you can easily open the door even when the ramp is in use.

T80 ramps	T80060	T80075	T80125
Total length	60 cm	75 cm	125 cm
Width	80 cm	80 cm	80 cm
Max. superable height	12 cm	15 cm	25 cm
Total weight	8,00 kg	12,00 kg	21,50 kg
Max. load	225 kg	225 kg	225 kg
Height adjustment	5-9 cm	8-13 cm	11-28 cm



### TERRACE RAMPS WITH FOLDING PART MODEL TSR

Made of aluminium with anti-slip surface. Suitable for bridging doorsteps that are raised on both sides, e.g. to the balcony, terrace or garden. The bridging function of the two-part ramp and the height adjustability of the ramp feet allow the ramp to be used in a variety of ways. In most cases, the ramp can remain placed outside, as the inner part can be easily folded down to allow the door to be closed without having to remove the ramp.

TSR ramps	TSR130	TSR140
Total length (with opened flap)	130 cm	140 cm
Width	80 cm	80 cm
Size of flap	30 x 75 cm	40 x 75 cm
Max. superable height	20 cm	20 cm
Total weight	14,70 kg	16,60 kg
Max. load	225 kg	225 kg
Height adjustment of the feet	15-22,5 cm	15-22,5 cm



# THRESHOLD RAMPS

## THRESHOLD RAMPS OF ALUMINIUM MODEL DS

The DS4076 and DS4025 are folding threshold ramps made of aluminium with an anti-slip surface. The ramps have 2 milled handles and are equipped with a longitudinally running hinge for folding. Suitable for threshold heights from 2 to 5 cm.

A comfortable carrying bag is included (for DS4025).

Technical data	DS4076	DS4025
Dimensions (L x W)	40 cm x 76 cm	40 cm x 25 cm (x 2)
Weight	3,3 kg	2 kg (as pair)
Max. Load	350 kg	350 kg



The DS2176 is a mobile height adjustable threshold ramp in aluminium with an anti-slip surface.

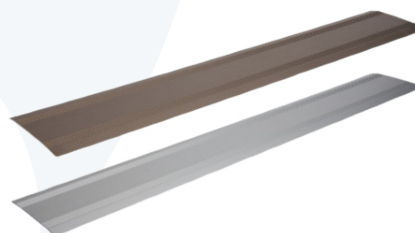
The 3+3 supplied feet are adjustable from 3 to 7 cm.

Technical data	DS2176
Dimensions (L x W)	21 x 76 cm
Weight	1,55 kg
Max. Load	350 kg



## DOOR RAILS

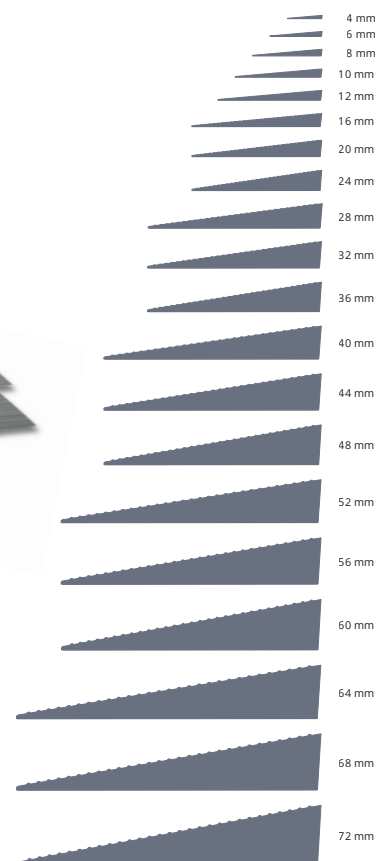
The door rails made of champagne-colored or silver-colored anodized aluminium are simple aluminium strips for bridging transitions, e.g. in case of missing door sill strips. The door rails are available in different widths: 125 mm, 150 mm or 175 mm.



## RUBBER RAMPS

Mobilex rubber ramps are made of rubber (TPE) and do not contain any PVC. They are available in different heights (see table). The standard width L is 900 mm, but they are also available in widths of L = 700 or L = 1000 mm. For attachment to plain floors, the rubber ramps are equipped with a double-sided adhesive tape on the bottom side. For laying out on carpeted floors or similar, the rubber ramps can also be supplied without adhesive tape.

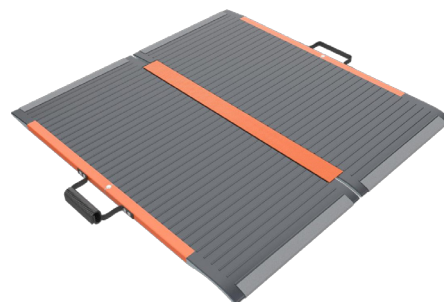
Available in three new sizes :  
**64 mm, 68 mm and 72 mm**



# CARBON FIBRE RAMP

## CARBON FIBER RAMP MODEL CB

For mobile wheelchair ramps, weight and manageability play a very important role. Even the lightest aluminium can not always guarantee a low weight and therefore we decided to use the lightest and most torsion-resistant material *carbon fibre* for the ramp serie CB. Carbon fibre is extremely strong and reduces the weight by 30% compared to an aluminium ramp of the same size. There is no better choice for an extremely light and agile wheelchair ramp.



CB Carbon Ramp	CB-082
Length	82 cm
Width (per rail)	78 cm
Max. Elev. / height	16 cm
Weight	3 kg
Max. load	350 kg
Folded size (LxW)	82 x 39 cm



### Wheelchair ramps from Mobilex

More and more opportunities are being created for people with physical disabilities to actively participate in everyday social life. Every day, people with disabilities face insurmountable obstacles, be it curbs, steps, or even small threshold crossings to shower trays or other rooms. With its extensive range of various ramp systems, Mobilex offers the right solution for almost every situation, both indoors and outdoors, for stationary and mobile applications.

### Which ramp for what?

The choice of the right ramp generally depends on the particular application, the height of the obstacle, the feasible slope and the necessary load on the ramp.

Basically, the following proven rules apply to the slope in the private sector:

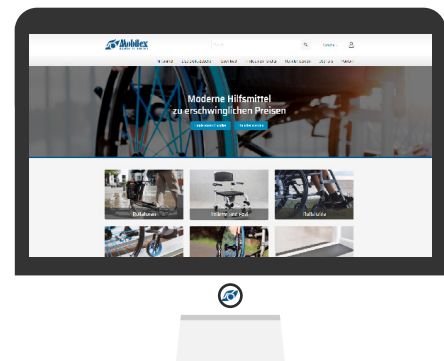
- For self-propelled vehicles= approx. 6% gradient
- For strong self-propelled persons= approx. 6 - 10% gradient
- One is pushed by a weaker person= up to approx. 12%.
- One is pushed by a strong person= up to approx. max. 20%.
- For electrically driven wheelchairs or scooters= up to max. 20%.  
(Here, however, the manufacturer's specifications also apply)

Ramps in the public sector and in rented housing must always be designed in accordance with DIN 18040-1/2 with a maximum gradient of 6%. For larger inclines of 8% or more, an anti-tip device should be used as well as a safety belt. In addition, a low-set tread plate can bump.



## MODERN AIDS AT AFFORDABLE PRICES

We offer a wide selection of aids and spare parts for the elderly and people with disabilities. All our products are of the highest quality to meet the special needs of users.



Visit us on [www.mobilex.dk](http://www.mobilex.dk)



Tel. +45 8793 2220  
Fax +45 8793 1777  
[www.mobilex.dk](http://www.mobilex.dk)

Mobilex A/S  
Grønlandsvej 5  
DK-8660 Skanderborg