

KAKADU

COMMODE AND SHOWER CHAIR



TABLE OF CONTENT

GENERAL DESCRIPTION	2
KAKADU COMMODE AND SHOWER CHAIR	3
FUNCTION AND TECHNICAL DATA	4
ACCESSORIES	
24" wheels, antitip, safety belt, velcro back	5
Various seats, splash guard, headrest	6
Soft cushions, security bar, amputation support, side support, 5" wheels	7
KAKADU TILT COMMODE AND SHOWER CHAIR	8

GENERAL DESCRIPTION

The Mobilex commode and shower chairs are made of high-quality materials, offer the user a high level of comfort and are also easy to use and clean for care personnel.

The commode and shower chairs are height adjustable and can be assembled quickly and easily. When developing our shower and commode wheelchairs, we have focused on making all models easily adaptable so that they can be used as standard for most users.

A wide range of accessories makes it possible to meet most requirements and increase the comfort of the individual user. The stable frame is made of high quality white powder coated aluminium. Screws and other steel parts are consistently made of stainless steel, giving the commode and shower chair a long and maintenance-free life. The seat, back and armrests are made of durable black soft PU foam, which is comfortable for the user and has a timeless design. The four lockable 5" wheels are equipped with an effective protection which ensures that no hair or other dirt can accumulate in the wheel. The wheels are made of plastic and stainless steel and have a double-funktioning brake.

The Mobilex commode and shower chairs facilitate daily cleaning and can be machine washed in accordance with the latest guidelines, e.g. in home care, nursing homes or similar institutions.

KAKADU

COMMODE AND SHOWER CHAIR



1 Soft PU foam backrest. A velcro backrest is available as accessory.

2 Elevating armrests with soft polyurethane foam padded supports.

3 Seat with a cut for hygiene. Other types of soft seats can be supplied as accessories.

4 Side foldable legrests.

5 Folding footrest adjustable in height and inclination.

6 5" (125 mm) lockable castors, suitable for seat height adjustment.

FUNCTION

AND TECHNICAL DATA



The 5" (125 mm) wheels are easy to mount. All 4 wheels are lockable and equipped with mud flaps.



The legrests can be mounted without tools and can be folded away to the side to facilitate entry and exit.



The toilet bucket can be easily removed even when the user is sitting in the chair.



The seat and lid are made of black soft PU foam for comfortable sitting.

Technical data	Small 302015	Standard 302018	Large 302019	XL 302020	Difference with 24"
Seat width	38 cm	45 cm	50 cm	55 cm	---
Seat depth	38 cm	43 cm	43 cm	43 cm	---
Seat height	50 - 55 cm	50 - 55 cm	50 - 55 cm	50 - 55 cm	---
Seat out-cut	17 x 33 cm	21,3 x 40,5	21,3 x 40,5	21,3 x 40,5	---
Passover height *	42 - 47 cm	42 - 47 cm	42 - 47 cm	40 - 45 cm	---
Passover width	32 cm	40 cm	45 cm	50 cm	---
Total width	49 cm	56 cm	61 cm	66 cm	+ 8 cm
Total depth	85 cm	93 cm	93 cm	93 cm	+ 15 cm
Total height	96 -101 cm	96 -101 cm	96 -101 cm	96 -101 cm	---
Max user weight	130 Kg	150 Kg	150 Kg	200 kg	---
Total weight	11,00 Kg	12,90 Kg	13,50 Kg	14,10 kg	+ 2,90 kg

* The wheels with extended tube (accessory - itemnr. 30212M) allow an additional passover height of +5 cm.

ACCESSORIES

The Mobilex commode and shower chairs can be fitted with **large rear wheels** so that the user can move around on their own. The 24" rear wheels are supplied complete with parking brakes, pushrims and solid tyres. *Itemnr. 302017*



The pushrim has an anatomical inner part to provide a good grip even with wet hands. The 24" wheel kit also contains the brakes and all the parts necessary for assembly. Please note that the 24" wheels increase the total width by 8 cm after assembly.

When using the 24" rear wheels it can be advantageous to fit an **antitip** especially on the "Tilt" model. The anti-tip (see picture below) can be mounted easily and without tools. *Itemnr. 302125*



The **security belt** has no metal parts that can rust and is therefore particularly suitable for humid environments. The belt can also be used as an **additional support belt** for the lumbar region. *Itemnr. 302122*



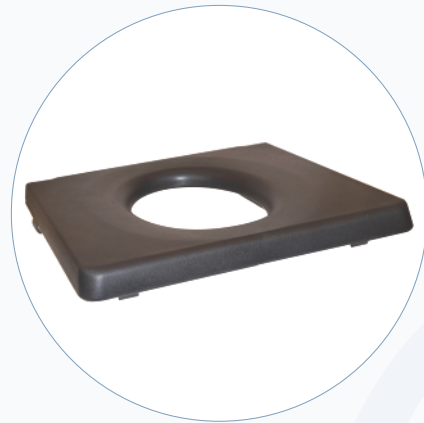
To provide the user with optimal back support, a **velco backrest** can be adopted which can be optimally adapted to the user's back by means of 3 adjustable straps. The perforated surface does not absorb water, allowing the skin to breathe. *Itemnr. 302164*



ACCESSORIES

The **seat made of soft PU foam** is equipped with a hygiene cut-out as standard. The edges of the cut-out are inclined so that the lid sits firmly in it. The seat is fixed with clips and can be easily removed without tools. The cut-out measures 27 x 19 cm.

Itemnr. 302103 (lid)
Itemnr. 302107 (seat)

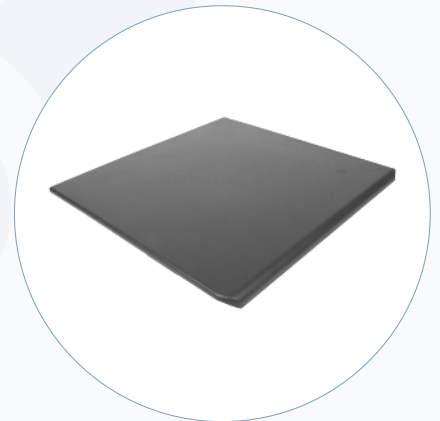


A soft PU **seat with oval cut-out** and closed front is optionally available. The seat is attached with clips and can be easily removed without tools. The cut-out measures 27 x 19 cm.

Itemnr. 302109

For both the standard seat and the oval cut-out seat, a **closed soft PU seat plate** is available which covers the entire seat surface. The seat plate is shaped so that it fits into the seat cut-out and therefore cannot slip, even during movements.

Itemnr. 302110



In case the urine flow does not hit the bucket, a **splash guard** can be attached to the front edge of the hygiene cut-out without tools. The splash guard also acts as a spacer between the legs. The product is made of soft polyurethane and is easy to clean.

Itemnr. 30214U

A **headrest** is available for all Mobilex commode and shower chairs and can be easily attached to the frame. It is adjustable both in height and depth. The headrest itself is made of soft, comfortable polyurethane foam and can be easily adapted to the shape of the user's head.

Itemnr. D2101



ACCESSORIES

The commode and shower chairs are equipped with a PU foam seat, which offers good comfort for most people. An additional **soft foam cushion** covered with Decutex is available for a better pressure relief. All sewings are fully taped so it is easy to clean and 100% waterproof. The cushions are available for both the seat with open front and the seat with closed front.

Itemnr. 30210U (open front)
Itemnr. 30211U (closed front)



In order to offer the user additional safety, a **safety bar** can be attached to the commode and shower chair. The adapters for the safety bar are fitted to the armrests, after which the bar can be easily removed and fitted.

Itemnr. 302127

The **amputation support** supports the leg stump in the correct position and can be fitted in place of the normal footrest without tools. The support is equipped with 2 moulded polyurethane shells that can be angled independently for optimal support.

Itemnr. 302128 (left)
Itemnr. 302129 (right)



The **side support pads** made of moulded polyurethane are mounted either on the rear tube or on the seat and are infinitely adjustable to the user's needs. The pads are available in 2 sizes of 10 x 14 cm or 14 x 20 cm.

Itemnr. 30212P (small)
Itemnr. 30212Q (large)

There are **5" wheels with extended tube** available for the Mobillex commode and shower chairs. This allows the seat height and the passover height of the shower and commode chair to be increased by 5 cm.

Itemnr. 30212M



KAKADU TILT



The **Kakadu Tilt** commode and shower chair can be individually adjusted from -5° to $+25^{\circ}$ in the seat tilt. The headrest with ear recess can be adjusted in height, depth and angle and is included in the delivery.

The lower leg length and the angle of the foot plates are adjustable on the footrests. The complete black upholstery, including the headrest, is made of soft PUR.

The Kakadu Tilt comes standard with four lockable 5" wheels, toilet bucket, lid and black seat cover.

Technical data	Tilt 302024	Tilt L 302025	Difference with 24"
Seat width	45 cm	50 cm	---
Seat depth	43 cm	43 cm	---
Seat height	55 - 60 cm	55 - 60 cm	---
Seat out-cut	21,3 x 40,5	21,3 x 40,5	---
Passover height *	40 - 45 cm	40 - 45 cm	---
Passover width	35 cm	40 cm	---
Total width	56 cm	61 cm	+ 14 cm
Total depth	110-120 cm	110-120 cm	+ 15 cm
Total height	97-141 cm	97-141 cm	---
Max user weight	150 Kg	150 Kg	---
Total weight	15,10 kg	15,70 kg	+ 2,90 kg
Tilt angle	from -5° to $+25^{\circ}$	from -5° to $+25^{\circ}$	---

* The wheels with extended tube (accessory - itemnr. 30212M) allow an additional passover height of +5 cm.

