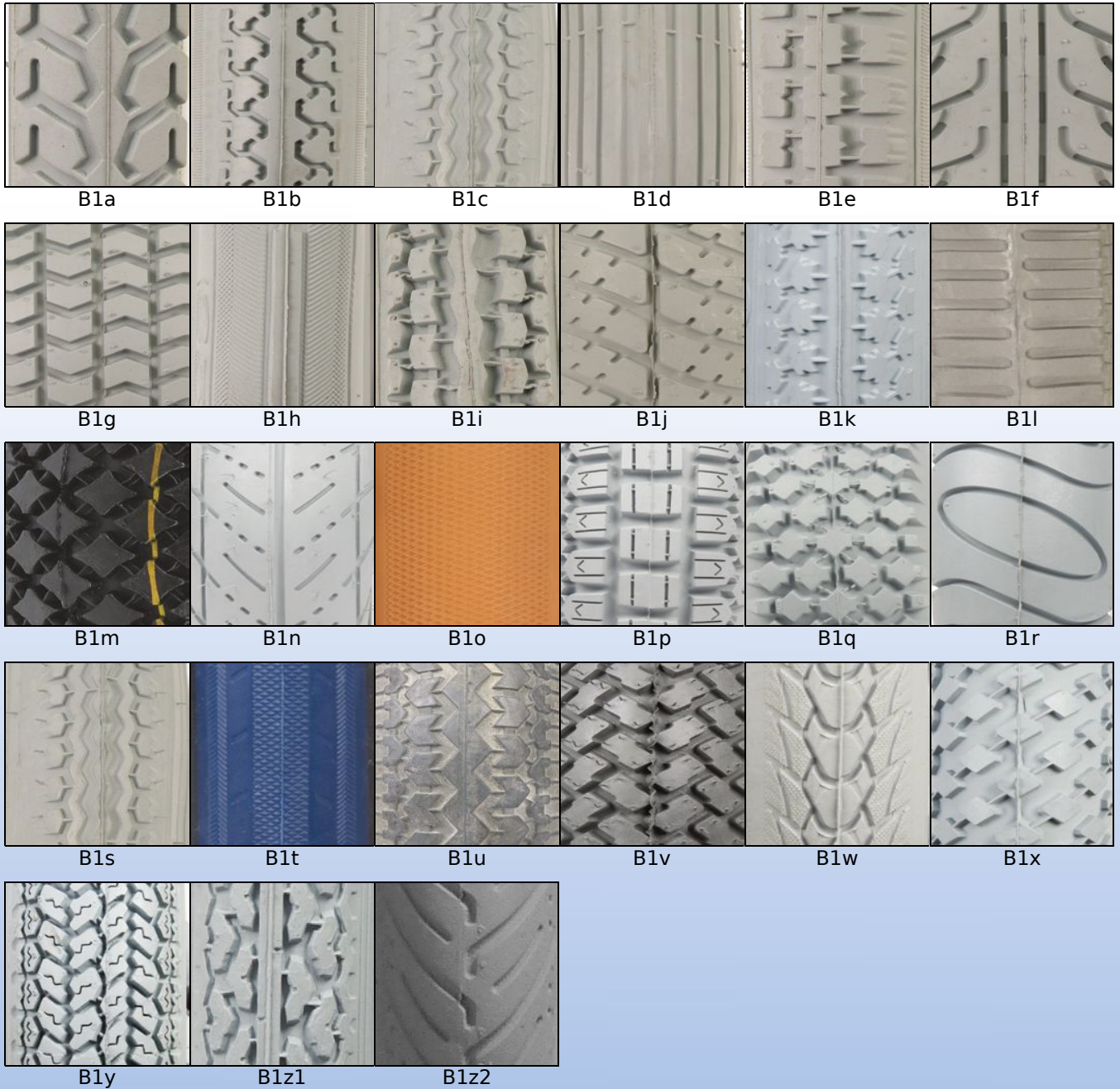
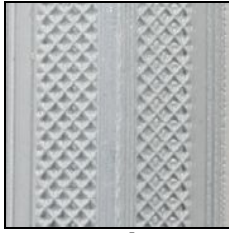


B1. Patterns of pneumatical tyres

B2. Schwalbe tyre patterns

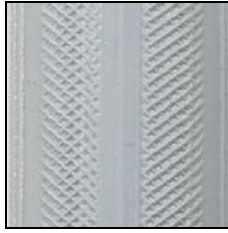

B3. Polyurethane tyres



B3a



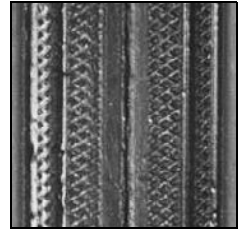
B3b



B3c



B3d



B3e

B3. FLEXEL Insert and Infill



B4a. Flexel with lip



B4b. Flexel without lip



B5. Flexel Infill



Flexel insert is used instead of the tube. Flexel insert offers a comfortable drive without the risk of punctures. We recommend the use of Flexel insert with our tyres to make sure that they fit optimally. Flexel insert has the advantage that it can be reused

Flexel Infill is a tyre that are filled with Flexel. These tyres are used with two-part rims. They can not be reused



B6. Flexel profile insert

Flexel profile insert is fitted between tyre and tube, and creates a 100% puncture proof protection. Flexel profile inserts can also be used on not-split rims and are also suggested for patients that prefers the pneumatical tyres driving comfort, but would like to avoid punctures.



B7. Mounting tool for Polyurethane tyres

Easy to use mounting tool where polyurethane tyres can be fitted to large wheels from 20" upwards.